



Live life independently.

This five-bedroom home has two large living areas situated either side of a well-equipped kitchen that includes a dishwasher. The bathroom is equipped with grab rails and the laundry opens to an attractive outdoor area. There are 2 vacant bedrooms both with built-in wardrobes and are accessible off a central hallway.

The house has broadband internet access, heating and cooling and wheelchair access. A carport provides parking for several cars with other parking available on the street. Pets are permitted. Caring, trained, experienced staff are available permanently on site.

There are currently 2 vacancies in this supported independent living home in Ringwood. The house is owned by the Department of Families, Fairness and Housing, and staff support is provided by Uniting Vic.Tas.

Georges House

Ringwood 3134
Property ID: 344

Location and proximity to amenities

Conveniently located near public transport in a tree-lined street in Ringwood, the house is close to Eastland shopping centre and medical facilities. The closest bus stop is just 100 metres away.

Accessibility

The home has wheelchair access and is suitable for those with medium and high care needs.

Current resident mix

The current residents are males aged between 40 and 60 years. They enjoy a quiet environment and would like someone they can talk to and engage with in games and walks. The house would best suit a mature, ambulant male who wishes to socialise (visitors and family are welcome), or who prefers to spend time by themselves.

Accommodation at Uniting Vic.Tas

At Uniting we care and support people living with disability in their quest to have both choice and control over where and how they live. The houses have full time care and support from highly qualified staff experienced in supporting people with complex needs.

We always consider the compatibility of residents in our homes. Once you let us know that you're looking for a new home, we will consider your age, gender, health needs, interests and personal requests, to ensure you and your fellow housemates are well-suited and likely to enjoy each other's company.

Learn more

Call us on 03 8870 4070 or visit unitingvictas.org.au/disability-SIL

Get in touch

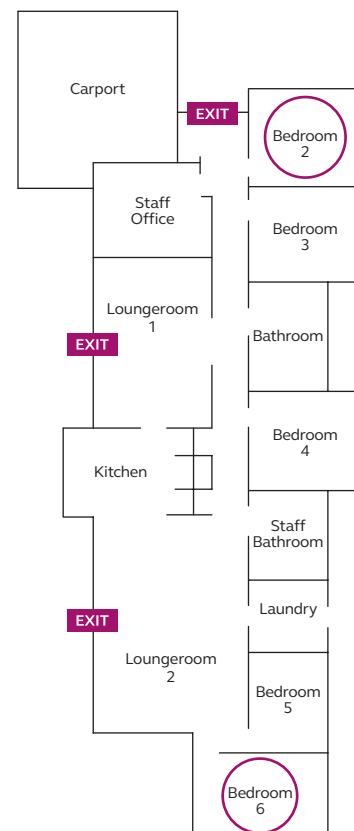
Please contact the East Vacancy Coordination Team on eastvct@dhhs.vic.gov.au

Applicants must be 18 years or over. This is an enrolled Specialist Disability Accommodation (SDA) property therefore the applicants will need to have NDIA approved SDA eligibility and the appropriate level of SDA funding available. Applicants will need to be able to pay rent and utilities. Applicants or their important person will need to establish a Residential Agreement. The SDA design category for this house is Fully Accessible. The SDA Building type for this house is Group Home.

Uniting (Victoria and Tasmania) Limited ABN 81 098 317 125



*Vacant rooms circled below



Uniting Vic.Tas is a registered NDIS provider.

