



**Keeping mums
and their babies
together.**

Alcohol and
Other Drug
Services

Uniting

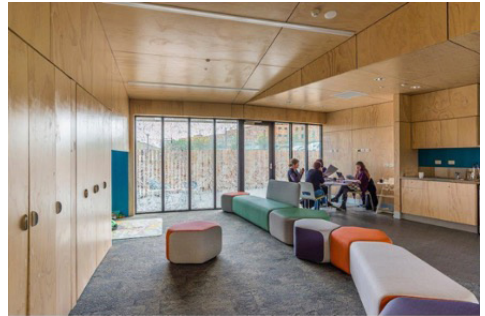
Uniting's Mother Baby inpatient withdrawal program is designed to reduce the number of infants removed from their mother's care. We work alongside families who are seeking help early in their pregnancy or after birth to ensure mother and infant remain together while the mother undergoes withdrawal from alcohol and other drugs.

Location

Curran Place Adult & Mother Baby Withdrawal Service is a state-wide residential program located in Ivanhoe. Four of the 16 rooms are available for pregnant women and mothers with babies, up to approximately 12 months old.

Duration

The length of stay is seven days. Pregnant women and mothers participate in therapeutic programs from day five and receive support to take steps towards sustainable changes to their alcohol and other drug use.



Supports available

We offer a non-judgemental approach and can help reduce a mother's fears of infant removal as she seeks help. During the withdrawal episode, mothers and infants receive support from childcare workers and a family counsellor to focus on parenting strengths, mother and child attachment and guided education on parenting skills. Visiting Maternal and Child Health Nurses attend in the first few days for mothers with newborns.

Early action is encouraged

Early action by the mother to seek initial and ongoing supports, and work collaboratively with maternal and child health services providers, and alcohol and drug services are more likely to have little or no child protection involvement when they commence treatment.

In most cases, mothers who sought treatment early and were able to find supports in the community have returned home with no child protection involvement.

Where child protection is involved

If there is ongoing family violence, parents have tried but struggled to reduce substance use and there is limited willingness to work with support services, families are sometimes referred to our program by child protection services.

This is an opportunity to take action. We can arrange for partners to attend another withdrawal service in Victoria, maintain links with antenatal care, and collaborate with other services.



About Uniting

Uniting is the community services organisation of the Uniting Church, delivering services and programs across Victoria and Tasmania.

We work in solidarity with Aboriginal and Torres Strait Islander people as Australia's First Peoples and as the traditional owners and custodians of this land.

We celebrate diversity and value the lived experience of people of every faith, ethnicity, age, disability, neurodivergence, culture, language, gender identity, sex, and sexual orientation.

We welcome lesbian, gay, bisexual, transgender, gender diverse and non-binary, intersex, and queer (LGBTIQA+) people at our services. We pledge to provide inclusive and non-discriminatory services.

The work we do is all about giving people the support they need to live happy and meaningful lives. We are committed to being people-focused and rights-based.

Where to get help

We encourage women to self-refer via our central intake line

T 1800 700 514

Referrals contact

Intake for all regions of Victoria

T Directline 1800 888 236

Curran Place Intake

T 03 9497 1122

E CurranPlaceIntake@unitingvictas.org.au

Interpreters available on request.



unitingvictas.org.au

Uniting (Victoria and Tasmania) Limited
ABN 81 098 317 125